

INDUSTRIAL RACKS DOLLIES TABLES & MORE



FOOD MAKERS BAKERY EQUIPMENT
844-207-0923 | www.FMBE.com

**FOOD MAKERS
BAKERY EQUIPMENT**

FMBE.com

SERVING YOU FOR OVER 37 YEARS



We believe in building a quality product that will outlast and out perform any other *rolling stock* on the market.

Our expertise in all aspects of the baking industry gives us special insight into your needs.

It's the high standard and work ethic of our team members that have made our company an industry leader for over 30 years.

Located in the city of Irwindale in Los Angeles. Our 60,000 square foot plant offers a full range of services to meet the needs of today's baker.

Make a smart investment in the company that knows this industry from the inside out.

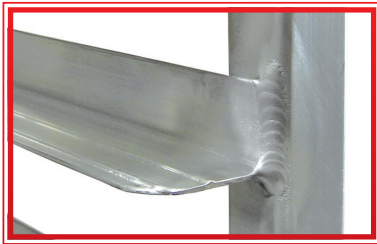
Prices and Product Specifications

Prices shown are list prices and are subject to change without notice. Prices may also be changed without notice due to unforeseen cost increases of imported products, raw materials, or currency fluctuations. We carefully check pricing and product specifications, but occasionally errors can occur, therefore we reserve the right to change both without notice. We are not responsible for customer pricing errors. Some variations between picture and product may occur. Some products listed may be non-stock items.



BUILT TOUGH

We Guarantee: Industrial Quality • Long Lasting Frame • Fastest Delivery



Order our optional double welds on all slides for superior strength and we will guarantee these welds for life. Imagine... a rack with no broken welds...ever !

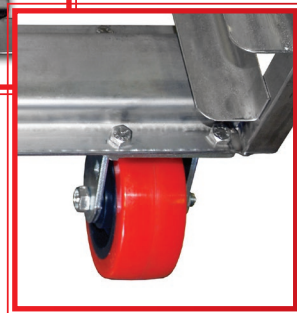


The second installment in our HEAVY DUTY LINE OF RACKS is our industrial, oversized red casters. Our 5"x 2" can support 750 lbs. per Caster. It is this strength that keeps our rack rolling.

WELDS NEVER BREAK



Lastly our heavy duty base plate design takes all the weight off the welds, making this a LIFETIME rack frame...no broken welds ever...nothing else compares.



WE DON'T DO LOW QUALITY RACKS



JUST SAY NO
to cheap racks



Stainless or Aluminum Pan Rack

All Standard Racks Include These Exceptional Features:



Premium
16-Gauge Slides



Unbreakable,
Welded Base Design

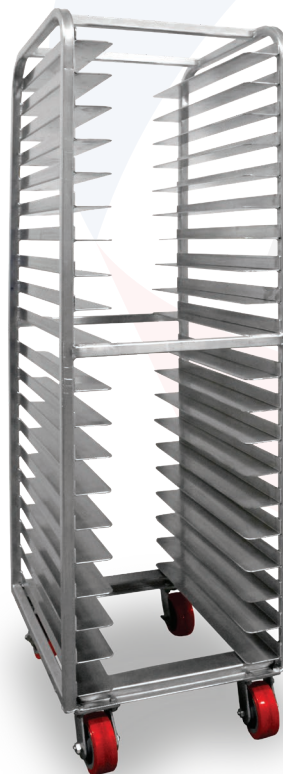


Industrial Casters,
3000 lbs. Load Cpty.

- Standard 16-Gauge Slides
- Red, 5" x 2" Industrial Casters
- Choose All Stainless Steel Or Aluminum Construction
- Built Using Our Exclusive, Indestructible Base Plate System
- Available In Multiple Variations To Suit Your Needs



Shown Here
SPE-203



Shown Here
Custom **SPE-203**
For **Compton's Repair**



Extra Wide Slides For Various Tray Shapes, Plus Added Strength.



**CUSTOM SIZING
AVAILABLE**

SPECIAL

	<u>Aluminum</u>	<u>Stainless</u>
10 Slides	\$ 299 \$ 344	\$ 415 \$ 478
15 Slides	\$ 339 \$ 390	\$ 470 \$ 541
20 Slides	\$ 380 \$ 437	\$ 525 \$ 604

Upgrade Options:

Add These Options For Increased Durability
And To Receive Our Lifetime Warranty

- Double Welded** - Add \$2.00 Per Set Of Slides
- 14-Gauge Slide** - Add \$8.00 Per Set Of Slides
- Stainless Steel Tray Guard** - Add \$23
- Aluminum Tray Guard** - Add \$12

Nesting Racks Stainless Steel



- Nest Several Racks Together For Easy Storage
- Maximize Production Floor Space
- Space Saving Design Allows Easier Clean-Up In Production Area
- Tough, Stainless Steel All-Welded Construction
- Heavy Duty Red Stem Casters Offer A Smooth & Quiet Experience
- *Optional:* Lifetime Guarantee With Double Welded Slides



Shown Here
SPE-203N

SPECIAL

15 Slides **\$ 434** \$ 499

20 Slides **\$ 489** \$ 562



Designed To Save You Valuable Floor Space

Limitless Customized Options

Our New Nesting Rack Stores Crates That Stack On Top Of Each Other For Easy Transporting And Loading.
Call For Pricing

Have Your Own Nesting Rack Need? Our Manufacturing Plant Can Accommodate Your Designs For Custom Order



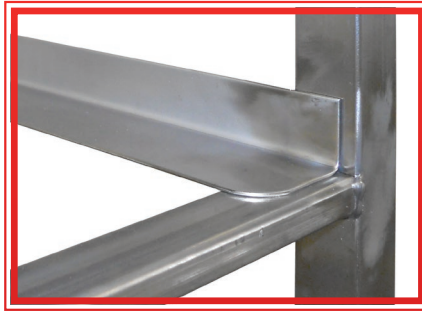
Shown Here
Custom **SPE-230-N12TW** For **Porto's Bakery**

SINGLE

Stainless Oven Rack



Shown Here
SOE-125-RC

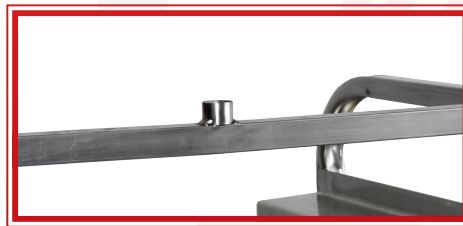


Tough 16-Gauge Slides

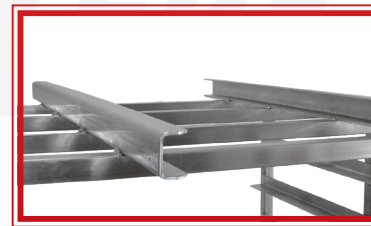


Indestructible, Welded
Base Plate Foundation

- Available With Lifts For The Most Popular Domestic And Foreign Ovens – LBC, Revent, Lucks, Baxter, Bakers Aid And More
- High-Temp Oven Wheels Stand Up To The Heat, Long Life - Easy Maintenance
- Heavy Duty Base Plate Design Makes This A Lifetime Frame



A Type Lift*



B Type Lift

Standard Or Custom Lifts Are No Problem

SPECIAL

Single 10 Slides	\$ 449	\$ 516
Single 12 Slides	\$ 471	\$ 542
Single 15 Slides	\$ 503	\$ 578
Single 20 Slides	\$ 558	\$ 642

**Deduct \$27 For Revent Type "A" Lift*



**CUSTOM SIZING
AVAILABLE**

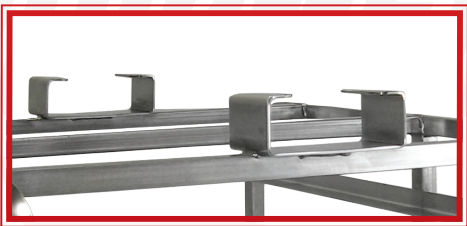
- Baking/Proofing

DOUBLE



2 Grease Zerks For
Ease Of Maintenance
AND LESS NOISE!

- Built Using Our Exclusive, Indestructible Base Plate System
- Available In Multiple Variations To Suit Your Needs
- Call For Specific Spacing, Or Custom Designs



C Type Lift



Shown Here
DO-125-LBC

For Our Manufacturing Teams

SPECIAL

Double 10 Slides	\$ 619	\$ 712
Double 12 Slides	\$ 646	\$ 743
Double 15 Slides	\$ 688	\$ 791
Double 20 Slides	\$ 758	\$ 872

**Deduct \$47 For Revent Type "A" Lift*

Consider These Upgrades:

For Increased Durability And To
Receive Our Lifetime Warranty

Double Welded - Add \$2.00 Per Set Of Slides

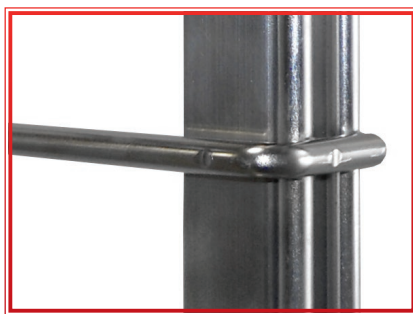
14-Gauge Slide - Add \$10.00 Per Set Of Slides



Stainless Steel *HIGH PRODUCTION* Oven Wire Cookie Rack

Holds 56 Pans!!

- Wire Construction Offers Greater Air-Flow Over Traditional Slides
- Decreases Bake Time
- Available With Lifts For The Most Popular Domestic And Foreign Ovens - LBC, Revent, Lucks, Baxter, Bakers Aid & More
- Heavy Duty Base Plate Design Makes This A Lifetime Frame
- High-Temp Oven Wheels Stand Up To The Heat, Long Life And Easy Maintenance



SPECIAL

56 Pan Capacity **\$ 841** \$ 967

*Deduct \$20 For Revent Type "A" Lift

Shown Here
DOW-28-B

Wire Rack Stainless or Aluminum



- Superior Performance For Cooling And Freezing
- Brings Down Temperature 35% Faster
- Wire Construction Offers Greater Air-Flow Over Traditional Slides
- Superior, Welded Base Plate And Industrial Casters Are Standard

SPECIAL

20 Slides **Aluminum** Frame **\$ 344** \$ 396

20 Slides **Stainless** Frame **\$ 398** \$ 458

36 Slides **Aluminum** Frame **\$ 431** \$ 496

36 Slides **Stainless** Frame **\$ 485** \$ 558

Shown Here
SWPE-20

Various Custom Oven Racks



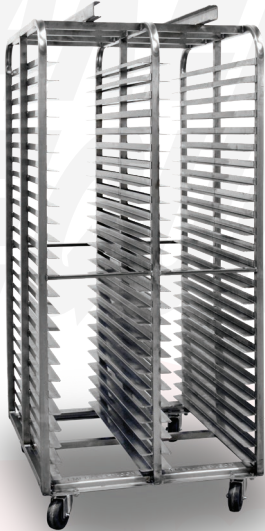
Shown Here
DO-154-B-1465DW



Shown Here
DO-154H-RADW



Shown Here
DO-6875TC



Shown Here
DOE-25225-B-RF



Shown Here
SDOE-125-RC

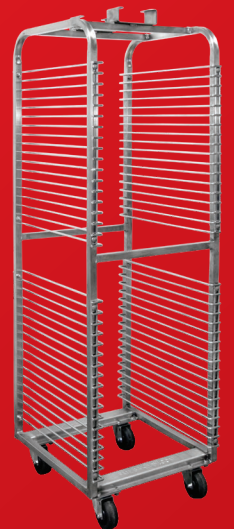


Shown Here
DO-13425RC38TG2H

**SINGLE OVEN RACKS
ALSO AVAILABLE**



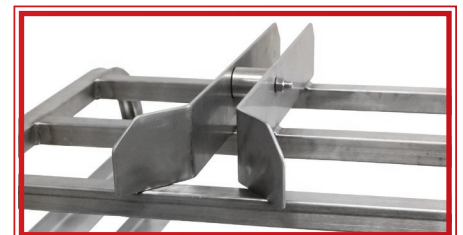
Shown Here
SOE-134-A-MB



Shown Here
SOWE-36-RC

Don't See Your Lift Type?

Our Manufacturing Department Can Design And Duplicate Any Lift Type Not Common In The Industry.
You Dream It, We'll Make It. Call Us



Shown Here
SPS-24384TC

Sanitary, Covered Top Proofing & Retarding Racks



THE SINGLE



THE DOUBLE



THE TRIPLE

Shown Here
SPDS-203TC

Shown Here
SPDS-203ZB

FORTIFIED FROM TOP TO BOTTOM



- Protects Top Pans From Condensation
- Guards Against Contamination Of Elements From Above
- Sturdiest Construction Available
- Red, Heavy Duty Casters Offer 3000 lbs. Weight Capacity And Smooth Transport
- Includes Industrial Proofing Casters For Smooth Wheels That Won't Damage Your Floors
- Available In Single, Double & Triple Wide Configurations

**Call Us For Pricing On These
& Other Configurations**



THE ULTIMATE DOUGH BLOCK RACK

Shown Here
SPE-203-HD

THE HEAVIEST RACK EVER BUILT

- 1.5" Square Tubing For Maximum Strength
- 14 Gauge Slides, Double Welded
- Smooth Red, 6"x 2" Industrial Casters Support
- Designed For Heavy Blocks of Dough
- Built Using Our Exclusive, Indestructible Base Plate System

Stainless

SPECIAL

3" Spacing	\$ 763	\$ 708
4" Spacing	\$ 665	\$ 671
5" Spacing	\$ 606	\$ 635
6" Spacing	\$ 568	\$ 597

Custom Configurations Are Welcome
Call Us With Your Requirements



50 Percent Thicker Tubing



3600 Lbs. Load Capacity



**CUSTOM SIZING
AVAILABLE**

Pan Display Rack Aluminum

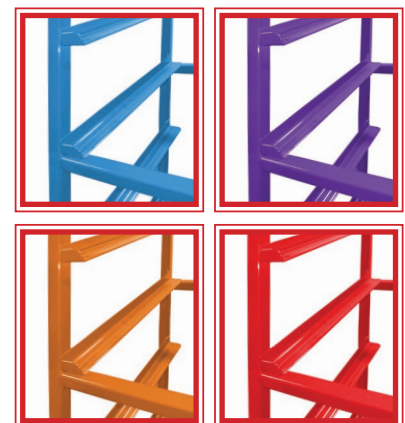
- Angled Slides For Perfect Presentation
- Strong All Aluminum Construction
- Choose Side Or End Loading Style
- Two Lock-In Place Casters
- *UPGRADE OPTION:* Powder Coat Finish Available In A Variety Of Colors To Match Your Décor

(Trays not included)

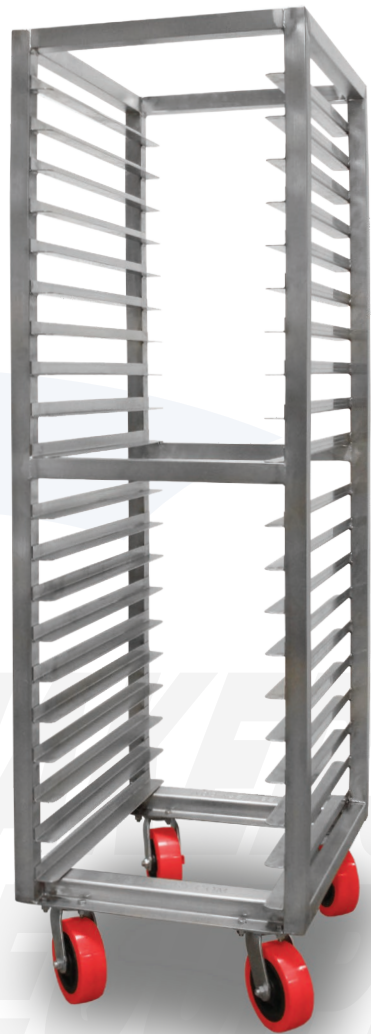
SPECIAL

7 Slides	\$ 243	\$ 272
10 Slides	\$ 266	\$ 294
12 Slides	\$ 282	\$ 318

Shown Here
APSD-7



**CUSTOM SIZING
AVAILABLE**



Teflon Coated Pans

Shown Here

Teflon Coated Standard Sheet Pan
8S7269TC



Shown Here

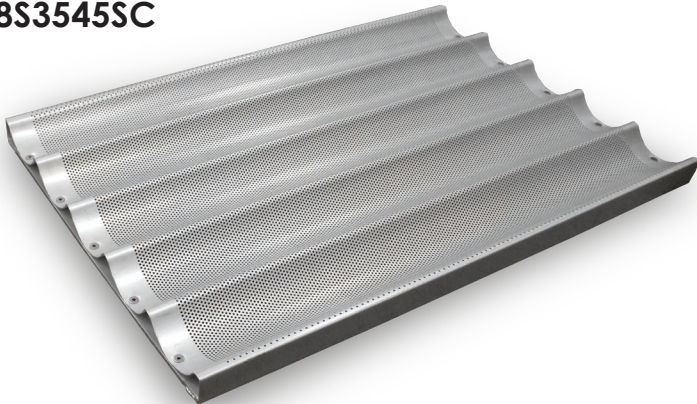
5 Row Baguette Pan Teflon Coated
8S3545TC



Silicone Glazed Coated Pans

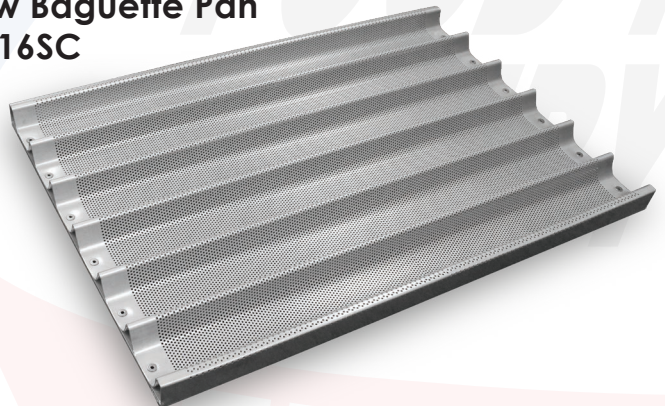
Shown Here

5 Row Baguette Pan
8S3545SC



Shown Here

6 Row Baguette Pan
8S1316SC



Shown Here

35-ON Muffin Pan
8S7250



Aluminum Sheet Pan

Shown Here

Standard Sheet Pan
8S7269

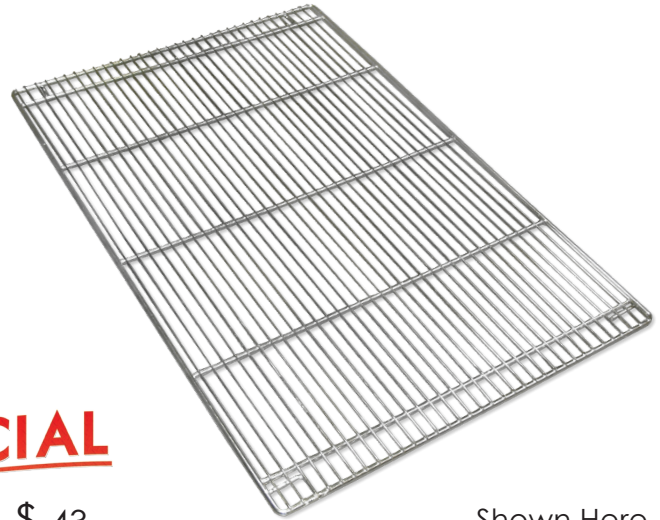




(Rack And Pans
Not Included)

Even Air Flow Rack Shelves

- More Consistent Air-Flow When Baking And Cooling
- Create A More Evenly Baked Product
- Move Beyond The Limitations Of Sheet Pans
- Fits Any Standard Single Rack & Double Rack
- Maximize Space And Production



SPECIAL

Single Rack 8S7106 18" x 26" Shelf **\$ 39** ~~\$ 43~~
Double Rack 8S4355 26" x 40" Shelf **\$ 70** ~~\$ 78~~

Shown Here
Wire Shelf
8S4355

Heavy Duty Rack Covers

- Protects Product From Outside Contaminants
- High Quality Plastic Limits Oxygen Exposure And Preserves Freshness
- 12g Vinyl Frosty Clear With Reinforced Corners
- Suited For Proofing And Baked Goods
- Fits Standard Single And Double Racks
- Easily Foldable For Storage
- Custom Options: Zipper, Window Placements And Overall Height

SPECIAL

Single Rack Cover 8S3287 **\$ 99** ~~\$ 140~~
Double Rack Cover 8S1340 **\$ 159** ~~\$ 210~~

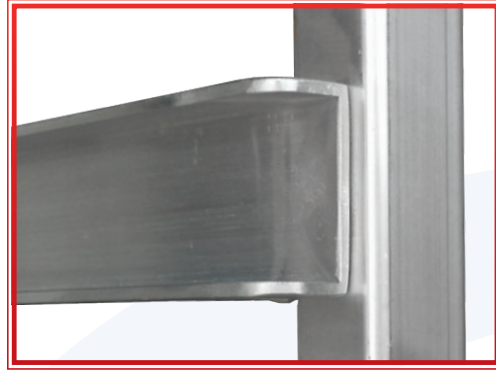


Shown Here
Double Rack Cover
8S1340



**CUSTOM SIZING
 AVAILABLE**

Cookie Rack Aluminum



- Double Capacity In Same Space As 20 Pan Rack
- All Welded, Tough Aluminum Frame
- Indestructible Base Plate Is Built To Withstand And Outlast Any Other Rack
- Industrial Heavy Duty Red Casters Can Support Up To 3000 lbs. And Its Polyurethane Wheels Provide A Smooth Ride That Won't Damage Your Floors
- Also Available In Nesting Rack Form For Space Saving Design

Shown Here
APEC-40

CUSTOM MADE
**CUSTOM SIZING
AVAILABLE**

**MADE IN
USA**

SPECIAL

36 Pan Capacity	\$ 388	\$ 446
40 Pan Capacity	\$ 444	\$ 511
44 Pan Capacity	\$ 466	\$ 536

Bread Cooling Rack

- Wire Cooling Rack Ensures That Cooling Air Flows Evenly Around Loaves
- Helps Seal The Bottom Of The Loaf And Prevents Over Baking
- Exclusive Base Frame Designed For Heavy Loads
- Extra-wide Red Industrial Casters Ensure Smooth, Safe Transport
- Available With Rounded Posts



Shown Here
SCR6-2472



**CUSTOM SIZING
AVAILABLE**

**OTHERS SIZES & SHELVES AVAILABLE
CALL US FOR PRICING**

SPECIAL

SCR6-2472

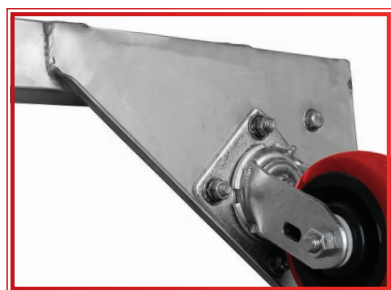
\$ 1109 ~~\$ 1,275~~

BCR Base Frame
FMBE Exclusive

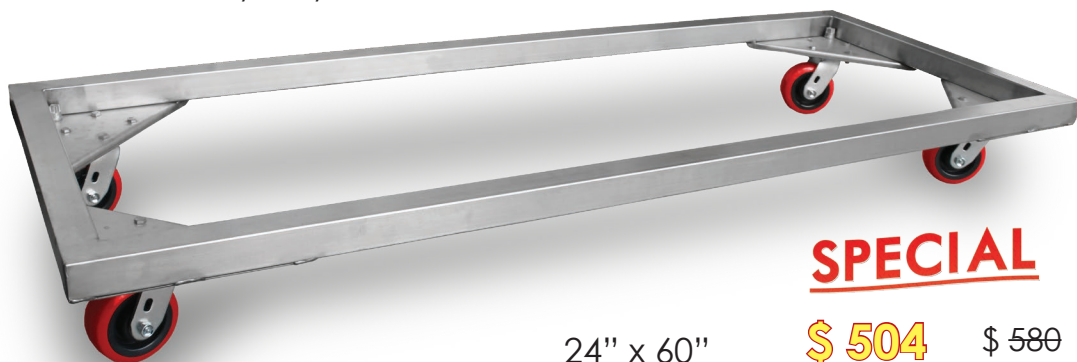


1" Round Posts

- Massive 2 Inch Tubing
- Compatible With Most Chrome Shelving With 1" Rounded Posts
- 5"x 2" Heavy Duty Casters



Triangle Shaped Base Plate
Offers Superior Support



Shown Here
SCRB-2472

24" x 60"

SPECIAL

\$ 504 ~~\$ 580~~

24" x 72"

\$ 520 ~~\$ 598~~

Stainless or Aluminum Platter Rack

- Heavy Duty Re-enforced Construction
- Unmatched Construction – Using 50% More Metal Than Other Brands
- Will Withstand Your Heaviest Loads
- Extra-wide Stem Casters Provide Quiet, Easy Glide Transport



Shown Here
APR-6

Shown Here
Custom **SPR** Platter Racks
For **Northgate**



Shown Here
SPR-6105-NG



Shown Here
SPR57-NG



**CUSTOM SIZING
AVAILABLE**



SPECIAL

APR-6 (6 Shelves - Aluminum) **\$ 383** \$ 440

SPR-6 (6 Shelves - Stainless) **\$ 595** \$ 684

Transit Cabinets



Shown Here
TC-40

Shown Here
TC-44



Shown Here
TC-24



Shown Here
Custom **TC-44-EO**
For **Paris Baguette**

- Extra Thick: 3/16" Door. 50% Thicker Than Any Other Cabinet
- Lifetime Door Hinges: Bolt And Welded For Superior Strength
- Heavier Cross Supports: Bolt And Welded
- 5" x 2" Red Industrial Casters: Safer Ease Of Movement, And Greater Stability From Tipping
- No Other Cabinet Offers This
- Custom Order Available To Your Requirements



**CUSTOM SIZING
AVAILABLE**

SPECIAL

24 Pan Capacity	\$ 684	\$ 787
40 Pan Capacity	\$ 845	\$ 972
44 Pan Xtra Tall	\$ 886	\$ 1019



Sheet Pan Dolly with handles

- Choose Your Handle Height
- Easy Glide, Extra-Wide Red Casters Roll Effortlessly
- 3000 lbs. Total Weight Capacity
- Welded Base Plate For Sturdy Transportation
- Custom Designs For Unique Pan Shapes Available



Shown Here
SSPD-48H

SPECIAL

36" High Handle

\$ 364 ~~\$ 419~~

48" High Handle

\$ 375 ~~\$ 431~~

Sheet Pan Dolly without handles



- Smooth Rolling Industrial Casters
- Indestructible Welded Frame Construction
- Fully Customized

Shown Here
SSPD



SPECIAL

\$ 245 ~~\$ 282~~



Baguette Pan Dolly with side walls

- Side Walls For Reinforced Side Coverage Keeping Non-Nesting Pans Stacked
- Super Strong Fixed Handle For Easy Maneuvering
- Heavy Duty Construction For Greater Capacity

Shown Here
SSPD-202948-GB

SPECIAL

48" High Handle

\$ 529 ~~\$ 608~~

60" High Handle

\$ 699 ~~\$ 804~~

Shown Here
Custom **SSPD-60/SB**
For **Saigon Bakery**

Double Sheet Pan Dolly with handles

- Super Strong Fixed Handle For Easy Maneuvering
- Can Hold Over 120 Sheet Pans With Ease
- Heavy Duty Construction For Greater Capacity
- Red Industrial Casters For Smooth Transporting



Shown Here
SSPDBL-48H

(Pans not
included.)

48" High Handle

SPECIAL

\$ 416 \$ 478



Side Load Sheet Pan Dolly with handles

- Easy Glide, Extra-Wide Red Casters Roll Effortlessly
- 3000 lbs. Total Weight Capacity
- Welded Base Plate For Sturdy Transportation
- Custom Designs For Unique Pan Shapes Available

Shown Here
SSPDD-18530-48H



SPECIAL

\$ 369 \$ 424

Deluxe Sheet Pan Dollies



- Choose Your Handle Height
- Easy Glide, Extra-Wide Red Casters Roll Effortlessly
- 3000 lbs. Total Weight Capacity
- Welded Base Plate For Sturdy Transportation
- Custom Designs For Unique Pan Shapes Available
- Available In Double Wide For Greater Capacity

Shown Here
SSPD-192960H

SPECIAL

SSPD-192960H - 60" High Handle

\$ 472 \$ 543

SSPDBL-3036572H - 72" High Handle

\$ 529 \$ 608

Shown Here
SSPDBL-3036572H



Stainless Steel Super Pan Dolly

- Sturdy Reinforced, Welded Handle
- Fits Standard Sheet Pans. Can Be Modified To Fit Your Pans
- 8" Casters Support 5000 lbs. Of Combine Weight For SUPER DUTY support
- Includes Two Front Super Duty Rigid Casters And Two Rear Swivel Super Duty Plate Casters
- Handy Durable Size. Lightweight For Easy Maneuvering And Storage

Shown Here
SSPD-2228-SB



SPECIAL

\$ 527 ~~\$ 606~~



Tool Cart with Slides

- Four Sided Splash Panel Keeps Everything Up On Top From Falling Over
- Stack Pans On 2 Tiers
- 3000 lbs. Total Weight Capacity
- Welded Base Plate For Sturdy Transportation
- Swivel Casters For Easy Maneuvering

SPECIAL

\$ 380 ~~\$ 437~~

Shown Here
SSC-37TC-SE



**CUSTOM SIZING
AVAILABLE**



Panning Cart



- Increased Efficiency By Placing Product On Pans Directly
 - Stack Pans On 2 Tiers
 - Welded Handle For Control While Rolling
 - Swivel Casters For Easy Maneuvering
- (Pans not included)**



Shown Here
SSPC

SPECIAL

\$ 438 ~~\$ 504~~

Heavy Duty Cart w/ Wide Grip Handle



Shown Here
SHDC-2639

Stainless Flat Bed Utility Cart



SPECIAL
\$ 955 ~~\$ 1098~~

Shown Here
SUCS-2858-HD8

Stainless Bread Strap Cart



SPECIAL
\$ 874 ~~\$ 1005~~

Shown Here
SUC-2858-HD8

Flat Bed Utility Cart / Bread Strap Cart

- Sturdy Reinforced, Welded Handle
- Fits 3 Row Of Pans – 28" x 58"
- Heavy Duty 14 Gauge – All Stainless Steel Construction
- Huge 8" Casters Support 5000 lbs. Of Combine Weight For SUPER DUTY support
- Includes Two Front Super Duty Rigid Casters And Two Rear Swivel Super Duty Plate Casters
- Perfect For Moving Pans, Bags Of Ingredients, Boxes And More

- Four Wall Design Keeps Load Contained In Place
- 2 Tiers Of Storage
- Welded Handle For Maximum Control
- Swivel Casters For Easy Maneuvering

(Barrels not included)

**CALL US
FOR PRICING**



Rolling Cutter / Drum Hanger Rack

- Stainless Steel Design
 - Reinforced Welds For Superior Strength
 - Solid Top Pan For Containment Or Storage Of Accessories And Tools
 - Swivel Casters For Easy Maneuvering
 - Custom To Your Specific Needs
- (Drums not included)**

**OTHERS SIZES AVAILABLE
CALL US FOR PRICING**

Shown Here
SDRR-24255/OCB

Stainless Dunnage Rack

- All Welded Construction
- Includes Adjustable For Height
- Our 2" Tubing Gives You Incredible Weight Support
- *Optional:* 5" x 2" Industrial Heavy Duty Casters For Mobility
- Built To Your Custom Size



Shown Here
SDR-5-2460

SPECIAL

\$ 450 ~~\$ 518~~



**CUSTOM SIZING
AVAILABLE**

**Stainless Dunnage Rack
with wheels**



Our Tube

Their Tube

DOUBLE THE STRENGTH

DUNNAGE RACK PRICING:

DUNNAGE RACK WITH BULLET FEET

	36"	48"	60"	72"
20"	\$ 343	\$ 373	\$ 404	\$ 434
24"	\$ 374	\$ 412	\$ 450	\$ 488
30"	\$ 407	\$ 453	\$ 499	\$ 545

4 CROSSBARS

5 CROSSBARS

6 CROSSBARS

* DUNNAGE RACKS 6 FEET AND OVER REQUIRE 6 LEGS

OPTIONS:

CASTER SETS: 4 LOCKING CASTERS

ADD	\$ 77
ADD	\$ 114

FOR DUNNAGE RACKS UNDER 6 FEET

FOR DUNNAGE RACKS 6 FEET AND LONGER

Shown Here: **24" x 60" with Casters**

SPECIAL

\$ 527 ~~\$ 606~~

Single Bin Compartment with Lid Cover



Shown Here
SIB-1

- Includes Stainless Steel Lid – Keeps Contents Sanitary When Closed
- Rigid-built Bin
- Easy Storage And Transportation Of Ingredients
- Handy Size And Lightweight For Easy Maneuvering
- Overall Dimensions:
L: 27 ¼" x W: 12 ½" x H: 26"

SPECIAL

\$514 ~~\$591~~



Shown Here
STM-282820-15

- Smooth Rolling Industrial Casters
- Indestructible Welded Frame Construction
- 3000 lbs. Total Weight Capacity
- Fully Customized To Your Specifications



**CUSTOM SIZING
AVAILABLE**

Stainless Steel Bowl Dolly



- Elevated Height Over Traditional Design Allows For Easier Transportation Of Bowl
- 4 Industrial Strength Locking Casters
- Lightweight For Easy Maneuvering
(Bowl not included)



**CUSTOM SIZING
AVAILABLE**

60/80/140 Quart

Shown Here
Custom **SBD-60Q**
For **KNS Foods**

Compartment Ingredient Bin Assembly



SIB-3-Complete
Capacity (per bin):
 Sugar: 75 lbs.
 Flour: 55 lbs.
 Volume: 12 Gallons

- New Sanitary Design, NSF Listed Bins
- Sturdy, Stainless Steel Lids.
(SIB-1 Model Is A Sliding Lid)
- Durable Welded Frame Cart On Smooth-Moving Casters
- Can Be Modified To Hold Container Of Your Specifications.
- Components Sold As A Complete Unit Or Separately

SPECIAL

SIB-3 COMPLETE	\$ 612	\$ 704
Cart	\$ 237	\$ 273
Bin (3 Required)	\$ 68 /ea.	\$ 78
S/S Lid (3 Required)	\$ 57 /ea.	\$ 66

Stainless Steel Dough Bin Cart



Shown Here
SDC-3025-TUB

- New Sanitary Design
- NSF Listed Non Rusting Polyethylene Bin
- Strong Red Heavy Duty Casters That Won't Damage Your Floors
- Durable Welded Frame On Heavy Duty Base Plate For Superior Weight Capacity
- Cart: W. 20³/₄" x L. 30¹/₄" x H. 33¹/₂"
 Bin: W. 24" x L. 21" x H. 21" 500 lbs. Dough Capacity.
- Can Be Modified To Hold Container Of Your Specifications

SPECIAL

*Complete Unit	\$ 528	\$ 581
Cart (ea.)	\$ 343	\$ 377
Tub (ea.)	\$ 192	\$ 221



SIB-2-Complete
Capacity (per bin):
 Sugar: 100 lbs.
 Flour: 80 lbs.
 Volume: 16 Gallons

SIB-2 COMPLETE	\$ 573	\$ 659
Cart	\$ 227	\$ 261
Bin (2 Required)	\$ 97 /ea.	\$ 112
S/S Lid (2 Required)	\$ 76 /ea.	\$ 87



SIB-1-Complete
Capacity:
 Sugar: 200 lbs.
 Flour: 145 lbs.
 Volume: 35 Gallons

SIB-1 COMPLETE	\$ 432	\$ 497
Cart (ea.)	\$ 212	\$ 244
Bin (ea.)	\$ 124	\$ 143
S/S Lid (ea.)	\$ 96	\$ 110

**Available Separately Or
 As A Complete Unit**



**CUSTOM SIZING
 AVAILABLE**

Shown Here
 Custom **SDC-3025-TUB-IB**
 For *Irene's Bakery*



Shown Here
SDC-3025-HDC



Spigots Or Spouts May Be
 Added To These Tanks.



Shown Here
8S4356

CUSTOMIZE YOUR

OUR HEAVY DUTY TABLES ARE BUILT FOR ENDURANCE, LONG LIFE AND MADE TO

OPTIONAL: SLIDING DRAWERS

Stainless Steel Construction And Sleek Design Offers A Convenient Storage Option Intended To Increase Your Production

EXTRA HEAVY TOP

14 Gauge Top Is Standard. Built To Last And Withstand The Abuse Of Daily Prep Work

SHELF SPACE

Add One, Two or Three T
Call Us For Pricing

TWO INCH FRAME

Massive 2" Tubing Is The Strongest, Most Durable Table Ever Made

STANDARD OPEN BASE

Allows For Additional Storage Bins

OPTIONS

* UNDERSHELF

16 Gauge Undershelfs Are Built Strong, And Well Utilized For Extra Storage Space

* STORAGE CAPACITY

The Open Base Design Allows For Greater Capacity For Storage of Mini Racks And Ingredient Bins

FOOT
Stainl
Speci
Tubing



WE WILL MAKE ANY SIZE YOU NEED

TABLE

ORDER FOR YOU!

TABLE PRICE GUIDE

Standard Table: **Custom Sizes On Request**

Super Heavy Duty 14 Gauge Top With Open Base

WIDTH

DEPTH

	36"	48"	60"	72"	84"	96"
30"	\$ 703	\$ 793	\$ 866	\$ 958	\$ 1177	\$ 1250
36"	\$ 750	\$ 864	\$ 937	\$ 1041	\$ 1272	\$ 1353
42"	\$ 798	\$ 936	\$ 1007	\$ 1125	\$ 1368	\$ 1456
48"	\$ 845	\$ 1007	\$ 1077	\$ 1209	\$ 1463	\$ 1560

ADD FOR: HEAVIER 12 GAUGE TOP

	36"	48"	60"	72"	84"	96"
30"	\$ 53	\$ 69	\$ 85	\$ 101	\$ 117	\$ 132
36"	\$ 62	\$ 81	\$ 100	\$ 118	\$ 137	\$ 156
42"	\$ 72	\$ 93	\$ 115	\$ 136	\$ 158	\$ 179
48"	\$ 81	\$ 105	\$ 130	\$ 154	\$ 179	\$ 203

ADD FOR: OPTIONAL 16 GAUGE UNDERSHELF

	36"	48"	60"	72"	84"	96"
30"	\$ 144	\$ 182	\$ 219	\$ 256	\$ 278	\$ 316
36"	\$ 157	\$ 201	\$ 245	\$ 289	\$ 313	\$ 357
42"	\$ 170	\$ 221	\$ 271	\$ 321	\$ 349	\$ 399
48"	\$ 183	\$ 240	\$ 297	\$ 354	\$ 384	\$ 441

OPTIONS:

ADD FOR: OPTIONAL BACKSPLASH

	36"	48"	60"	72"	84"	96"
14 GA	\$ 38	\$ 46	\$ 53	\$ 61	\$ 69	\$ 77
12 GA	\$ 46	\$ 57	\$ 68	\$ 78	\$ 89	\$ 100

LOCKING CASTER SETS:

ADD	\$ 45	FOR TABLES 6 FEET AND UNDER
ADD	\$ 65	FOR TABLES 7 FEET AND LONGER

ADD FOR: 12" DEEP 16 GAUGE OVERSHELF

	36"	48"	60"	72"	84"	96"
16 GA	\$ 301	\$ 338	\$ 375	\$ 412	\$ 449	\$ 486

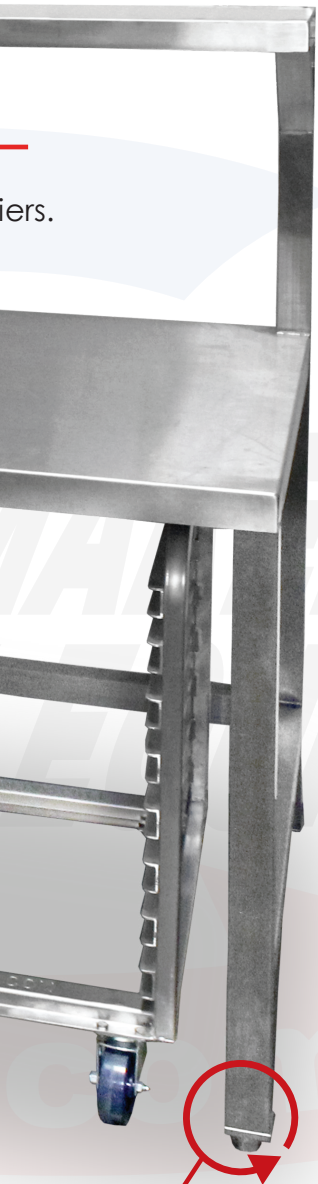
STAINLESS STEEL
PARCHMENT PAPER HOLDER:

ADD	\$ 100	PER HOLDER
-----	--------	------------

STAINLESS STEEL
UTENSIL DRAWER:

ADD	\$ 255	PER DRAWER
-----	--------	------------

Crating: Add \$75 Per Table For Crating



INSERTS

Stainless Steel Foot Inserts
Specifically Designed For 2"
Inch Thick Top For Superior Support

D.

Stainless Steel Tables

- The Most Durable Table In The Industry Made Tough For Daily Production
- 2" Stainless Steel Tubing Legs Provide The Most Rigid, Solid Work Space
- Can Be Built To Accommodate Any Size Or Shape
- Mandatory For High-Output Production Areas



Shown Here
ST-3672-2



Shown Here
STM2D-3672

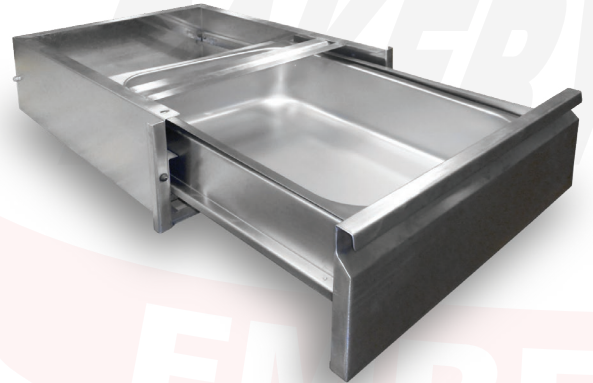


2" Tubing Makes Our Tables More Reliable & Stronger Over The Industry Standard Of 1" Inch Tubing

Pricing Available In Previous Chart

Stainless Steel Sliding Drawer(s)

- Strong, Durable And Sleek Construction
- Under The Table Slide Out Design Keeps Drawer Hidden And Unobtrusive
- Drawer Size: 14 ½" Width x 20" Length
- Overall Size: 19 ½" Wide x 6 ¾" High x 24" Deep



Rolling Dough Table Dough Prep/Transit

- Perfect For Dough Prep And Transit
- White, Polyurethane Surface Holds Up To Dough Cutting Abuse
- Patented, Red Industrial Casters Make Maneuvering Easy
- Two (2) Locking Casters Secure This Work Surface - Until You're Ready To Move
- Removable Guard Walls Contain Soft Ciabatta-Type Doughs



Shown Here
STMTB-487234-M

Call For Pricing

Maple Top Tables

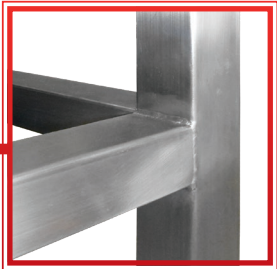
- 1¾" Industrial Maple Top
- Solid Construction For Industrial Environment
- 2" Stainless Steel Frame
- Built To Last



Shown Here
WTSF-3672-2



Shown Here
WTSF-3696-2



Massive 2 Inch Tubing
Makes This Table The
Strongest, Most Durable
Table Ever Made

TABLE PRICING:

MAPLE TOP TABLE WITH STAINLESS STEEL

	36"	48"	60"	72"	84"	96"
30"	\$ 658	\$ 744	\$ 828	\$ 915	\$1,135	\$1,235
36"	\$ 733	\$ 841	\$ 945	\$ 1,051	\$1,300	\$1,406
48"	\$ 864			\$1,357		\$1,865



Shown Here
WTSFM2D-3072

ADD FOR: OPTIONAL 16 GAUGE UNDERSHELF

	36"	48"	60"	72"	84"	96"
30"	\$ 147	\$ 188	\$ 227	\$ 258	\$ 278	\$ 313
36"	\$ 162	\$ 211	\$ 253	\$ 294	\$ 312	\$ 354
48"	\$ 186			\$ 357		\$ 435



**CUSTOM SIZING
AVAILABLE**

CASTERS SETS, 2 SWIVEL AND 2 LOCKING:

ADD	\$ 45	FOR TABLES <u>UNDER</u> 6 FEET
ADD	\$ 65	FOR TABLES 6 FEET AND LONGER

STAINLESS STEEL UTENSIL DRAWER:

ADD	\$ 255	PER DRAWER
------------	---------------	------------

STAINLESS STEEL PARCHMENT PAPER HOLDER:

ADD	\$ 100	PER HOLDER
------------	---------------	------------

Crating:
Add \$75 Per Table For Crating

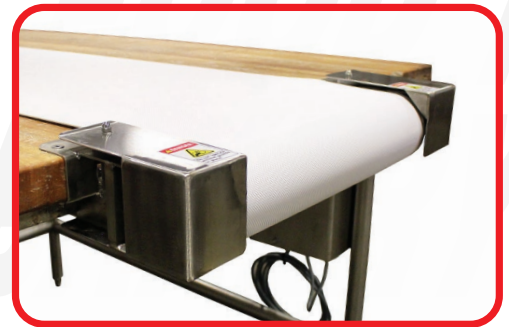
IN-HOUSE MANUFACTURING

Food Makers Bakery Equipment custom manufactures racks, dough bins, rolling stock, panning carts, tables, and many different types of conveyors.

With over 30 years of experience in the baking industry, we fabricate the toughest custom products, out of stainless steel and aluminum to meet your custom needs.



Custom Built Conveyor
For **Porto's Bakery** 2016



**Our
Seals**



Custom: Request To Have
This Product Altered
To Meet Your Needs.
Height, Length, Width etc.



Stainless Steel
w/ Over-shelf
STOS-3096



Stainless Steel
Table w/ Drawer
ST25D-306035



HAVE IT YOUR WAY

TALLER • SHORTER • BIGGER • SMALLER • DEEPER • WIDER • HEAVIER • STRONGER
CUSTOM MADE FOR YOU



Mobile Medium
 Prep Table
STS-3648-2-M



Mobile Cutting Board Top
 Prep Table
SCBT-3036-2-M



Mini Stainless Steel
 Tray Rack
APE-06336-CR



Made In America:
 Every Piece Of
 Equipment Shown



Warranty: We Stand By Our
 Products. Add The Double
 Welded Option & We
 Guarantee Our Rack For **LIFE**.



Super Duty
 4 Tier Serving Cart
SSPC-2444



Heavy Duty
 2 Inch Shelving
SDRM-5-2460-4



3 Tier Slanted
 Cart
SLC-315-FE



HOME TO THE STRONGEST, DURABLE, MOST WELL BUILT CASTERS



**SUPER DUTY
PLATE CASTER**



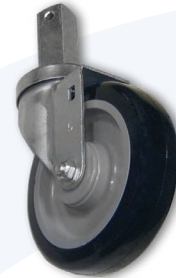
**SUPER DUTY
RIGID CASTER**



**HEAVY DUTY
PLATE CASTER**



**HEAVY DUTY
STEM CASTER**

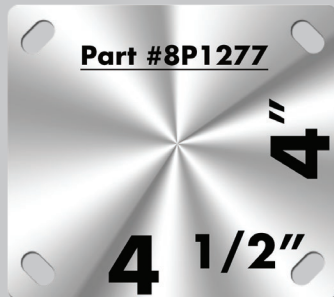


**MEDIUM DUTY
STEM CASTER**

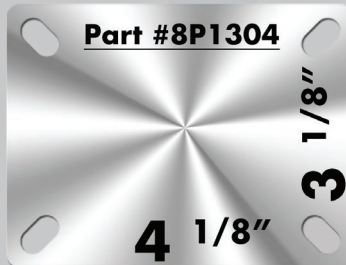


**HIGH-TEMP
OVEN CASTER**

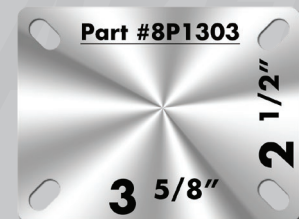
PLATE SIZES FOR HIGH-TEMP OVEN CASTER



LARGE



MEDIUM



SMALL

HIGH-TEMP OVEN CASTER

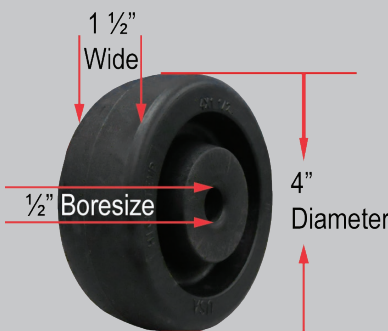


Tough, Industrial, High Quality Caster For Baking & Proofing. Available In Three Caster Plate Sizes

\$ 16.50 ea.

- Base-plate Size: **Small, Medium, Large**
- 5 1/4" High - 4" Wheel
- 2 Grease Zerks And A Bushing
- High Temperature Grease

Everything You Need To Maintain Your Oven Casters



High Temp. Wheel Only
#8P1283

\$ 7.50



Zerk Fitting
#8P1285

\$ 2.00



Bushing
#8P1284

\$ 1.50



High Temp. Grease
#9P2119

\$ 21.75



SUPER DUTY PLATE CASTER

Part# 8P1373

\$ 38.95 ea.

Superior Weight Capacity Caster For Extreme Loads. Smooth Coated Wheels Help Protect Floors From Damage

- Swivel Plate For Easy Maneuvering
- 8" x 2" Monster Wheel
- 2 Grease Zerks For Easy Maintenance
- **1250 lbs.** Load Capacity Per Caster

SUPER DUTY RIGID CASTER

Part# 8P1374



- Base-plate Size: 6 1/4" x 4 1/2"
- 8" x 2" Monster Wheel
- **1250 lbs.** Load Capacity Per Caster

Industrial Strength Caster With Smooth Polyurethane Wheel That Won't Damage Your Floors

HEAVY DUTY PLATE CASTER

- Base-plate Size: **Large Only**
- 5" x 2" Wheel
- 1 Grease Zerk For Easy Maintenance
- **800 lbs.** Load Capacity Per Caster



\$ 17.95 ea.

Part# 8P1330

MEDIUM DUTY PLATE CASTERS

Part# 8P1318



\$ 12.95 ea.

Part# 8P1307



Use For Moderate Weight Capacity

- Base-plate Size: **(8P1318: Large) (8P1307: Small)**
- 5" x 1 1/4" Wheel
- **250 lbs.** Load Capacity Per Caster



HEAVY DUTY STEM CASTER

Part# 8P1332

Exclusive Design Stem Caster 2 1/2" Stem And 7/8" x 7/8" Square Fitting

- 5" x 1 1/2" Wheel
- **500 lbs.** Load Capacity Per Caster

\$ 13.95 ea.

MEDIUM DUTY STEM CASTER

Part# 8P1310

Built For Moderate Weight Capacity 2 1/2" Stem And 7/8" x 7/8" Square Fitting

- 5" x 1 1/4" Wheel
- **250 lbs.** Load Capacity Per Caster

\$ 12.95 ea.



Over **10,000** Bakery Machines In Stock



**Ovens • Mixers • Proofers • Dividers
Sheeters • Slicers • Depositors
Bread • Bagel • Pastry Equipment
And Much More!**

Offering Only The Best!



Official Distributor



Visit Our Website To See Our Current Sales
& Huge Machine Inventory

We Have Over 10,000 Parts Available Online

www.FMBE.com or Call Us **626-358-1343**



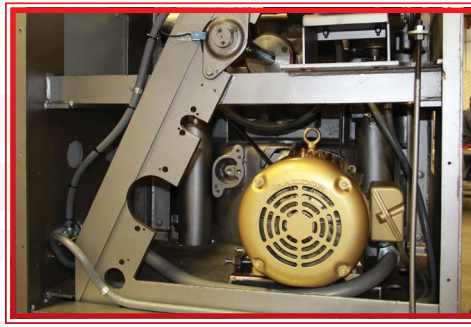
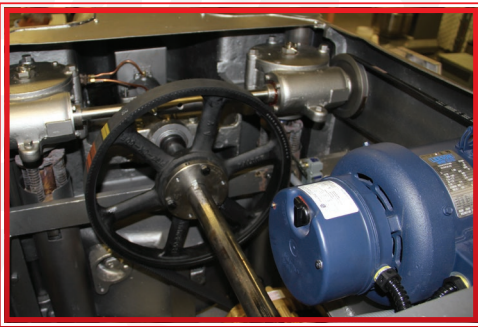
Built To New Standards Re-Manufacturing

All Our Machines Are Rebuilt
To New Machine Specifications:

- All New Parts
- All New Electrical Wiring Systems
- Ground Up Restorations`
- Half The Price Of New Machine-



Shown Here
**AMF 340 Glen
Spiral Mixer**
FMBE#13864



Test Bake Your Products In Our **Baking Center** Today





**FOOD MAKERS
BAKERY EQUIPMENT**

FMBE.com

follow us...



626.358.1343 | www.fmbe.com
Food Makers Bakery Equipment
16019 Adelante St, Irwindale, CA 91702