



PRODUCT GUIDE

The Highest Performing LED
Product Line in the World





CONTENTS

- 4 About Us
- 6 Area Lights
- 8 Wall Packs & Parking
- 10 High Bays
- 14 Vapor Tights
- 16 Troffers
- 18 Troffer Kits
- 20 Strips
- 22 Light Bars
- 26 Wraps & Tubes
- 28 UltraLink Wireless Controls
- 30 Lumens as a Subscription®
- 31 Light'Em Up Sales Contest



QUICKSHIP

Products featuring this icon can ship within 48 hours. Standard configurations only.



NLB TRUSTED WARRANTY

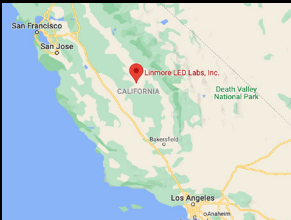
Linmore LED is approved by The National Lighting Bureau's (NLB) Trusted Warranty program. Our warranty department has been audited and approved by the NLB, validating we reliably stand behind our warranty. This empowers our customers to feel comfortable specifying, buying, installing, and using Linmore LED products.

ABOUT US



Made Here

Committed to deliver the best quality products while contributing to American jobs.



Fresno, CA
Headquarters & Manufacturing



Dallas, TX
Design Center & Innovation Hub



We Are Linmore LED

We make exceptional lighting products for a wide range of applications, customer types and budgets, from ultra-performance LED fixtures with integrated wireless controls, to high-value LED products and retrofit kits.



Our Vision

Become every commercial and industrial facility's first choice in lighting solutions based on performance, reliability, and customer support.



Our Mission

Design and manufacture LED lighting solutions with end-user value in mind, providing the highest performance in any product type offered.



Our Values

To make sure our customers have the best lighting for their needs and budget and are backed up by the best customer support and warranty.



AREA LIGHTS



SITE LIGHTER AREA LIGHT (SL1)



Applications: Outdoor Areas, Parking Lots, Wet Locations.



8,500 - 62,000 Lumens

Up to 174 LPW

Up to 55°C (130°F)

CRI > 70

2200K, 3000K, 3500K, 4000K, 5000K

Type 2, 3, 4, & 5, 35° & 60° Flood, Full

Cut-Off Front Row, Glare Shield

Input Power: 50-400W

100-277V / 200-480V

0-10V Dimmable

Bluetooth® Mesh Ready

Aluminum Construction

10 Year Warranty Complete System

Optional BAA Compliant



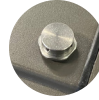
Ready

linmoreled.com/SL1



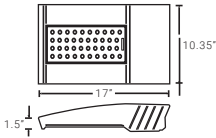
Wildlife Friendly Lighting Available 2800K CCT

Optimized spectrum for wildlife with only 0.14% blue content in the 400nm-700nm range and a peak wavelength of 579nm



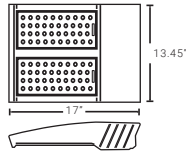
Featuring PRESSURE RELIEVE VALVE

Prevents condensation inside the fixture



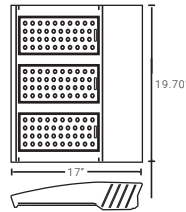
Small (SM)

Weight: 14 lbs.



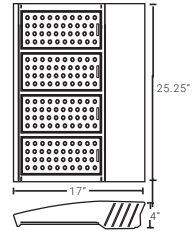
Medium (MD)

Weight: 16 lbs.



Large (LG)

Weight: 24 lbs.



Extra Large (XL)

Weight: 37 lbs.

Matching Wall Pack on Page 9 (SLW)

MOUNTING ACCESSORIES



Rapid Mount Bracket

U.S. Patent No. 10,845,039



Straight Arm



Slip Fitter

Knuckle Adapter



Trunnion Bracket

(Yoke)

WALLS PACKS & PARKING



SITE LIGHTER WALL PACK (SLW)



Applications: Outdoor Areas, Parking Lots, Wet Locations.



4,500 / 8,700 / 12,300 Lumens
Up to 180 LPW
Up to 55°C (130°F)
CRI > 70
2200K, 3000K, 3500K, 4000K, 5000K
Type 3 Polycarbonate Lens

Input Power: 25 / 50 / 75W
100-277V / 200-480V
0-10V Dimmable
Bluetooth® Mesh Ready
Aluminum Construction
10 Year Warranty Complete System



linmoreled.com/SLW

ACE WALL PACK (WP1)



Applications: Outdoor Areas, Parking Lots, Wet Locations.



5,600 / 8,000 / 10,500 Lumens
Up to 140 LPW
Up to 50°C (122°F)
CRI > 70
3500K, 4000K, 5000K
Impact Resistant Polycarbonate Lens,
Frosted, 120° Beam Angle

Input Power: 40 / 60 / 80W
120-277V
Photocell Included
Aluminum Construction
5 Year Warranty Complete System



linmoreled.com/WP1

PARKING GARAGE FIXTURE (PGF)



Applications: Parking Garages, Wet Locations.



5,400 / 7,700 / 10,900 Lumens
Up to 133 LPW
Up to 50°C (122°F)
CRI > 80
4000K, 5000K
Frosted Lens, Domed, Conical Design,
Wide Distribution, 180° Beam Angle

Input Power: 41 / 62 / 82W
120-277V
0-10V Dimmable
Bluetooth® Mesh Ready
Aluminum Construction
5 Year Warranty Complete System



linmoreled.com/PGF

HIGH BAYS



ESSENTIALS SERIES 4.0 (ES4)



Applications: Industrial, Manufacturing, Warehouses, Hangars, Indoor Sports, Convention Centers.



6,000 - 73,000 Lumens

Up to 168 LPW

Up to 65°C (149°F)

CRI > 80

3500K, 4000K, 5000K

Clear, Frosted, and Aisle Lenses

Rotatable Modules (0°, 45°, 90°, 135°)

Input Power: 41 - 465W

120-277V / 347-480V

0-10V Dimmable

Extruded Aluminum Heatsinks

Aluminum Driver Housing

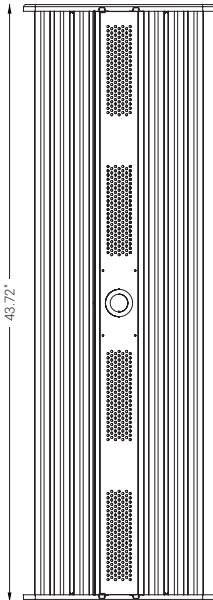
Wet Location & Dust-Proof Options

10 Year Warranty (L70 included)

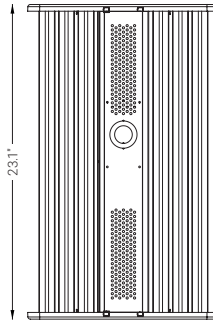


linmoreled.com/ES4

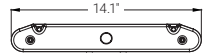
6 Modules Long (6M)



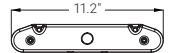
6 Modules Short (6MS)



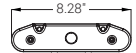
6 Modules (6M/6MS)



4 Modules (4M/4MS)

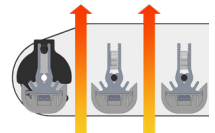


2 Modules (2M/2MS)



ALUMINUM HEATSINKS & WIREWAY

Extruded aluminum heatsinks with vertical fins and LED module separation allows for maximum heat dissipation and airflow, keeping the LEDs and driver cool for increased performance and extended life.



Superior Thermal Design

INDUSTRY AWARDS WON BY ESSENTIALS SERIES HIGH BAYS



COMMERCIAL HIGH BAY (CH2)



Applications: Industrial, Manufacturing, Warehouses, Hangars, Indoor Sports, Convention Centers.



6,000 - 37,000 Lumens	Input Power: 35 - 223W
Up to 173 LPW	120-277V / 347-480V
Up to 45°C (113°F)	0-10V Dimmable
CRI > 80	Extruded Aluminum Heatsinks
3500K, 4000K, 5000K	Extremely Long Life
Clear, Frosted, Narrow, and Aisle Lenses	Surge Protection up to 20kV
Compact Design, 18.5" Long	10 Year Warranty (L70 included)



linmoreled.com/CH2

NEW ACE LED HIGH BAY (AH1)



Applications: Commercial, Industrial, Warehouses, Indoor Sports, Convention Centers.



12,000 - 71,000 Lumens	Input Power: 85 - 500W
Up to 150 LPW	120-277V / 347-480V
Up to 50°C (122°F)	0-10V Dimmable
CRI > 80	Plug & Play PIR Sensor (Optional)
4000K, 5000K	Aluminum Heatsinks
Frosted Lenses	Aluminum Die-Cast Housing
Slim and Modern Design	5 Year Warranty



linmoreled.com/AH1

ELIMINATOR HIGH BAY (EHB)



Applications: Industrial, Manufacturing, Warehouses, Hangars, Indoor Sports, Convention Centers.



11,000 - 71,000 Lumens	Input Power: 75 - 400W
Up to 178 LPW	120-277V
Up to 55°C (131°F)	0-10V Dimmable
CRI > 70	Bluetooth® Mesh Ready
3500K, 4100K, 5000K	Aluminum Construction
Clear, Frosted, and Aisle Lenses	Surge Protection up to 20kV
2' and 4' Options	10 Year Warranty (L70 included)



linmoreled.com/EHB

EASY CLEAN HIGH BAY (ECH)



Applications: Washdown, Wet Locations, and Food Processing. Designed for Harsh Environments.



19,600 Lumens
129 LPW
Up to 50°C (122°F)
CRI > 70 / 5000K
Frosted Lenses, 120° Beam Angle
Pressure Relief Valve

Input Power: 152W
120-277V / 347-480V
0-10V Dimmable
Aluminum Enclosure
No-cavity Design Repels Dirt & Debris
5 Year Warranty



linmoreled.com/ECH

HIGH BAY RETROFIT SYSTEM (HBR)



Replaces: Fluorescent High Bays with our patented ParaBar™ Light Bars, LED drivers, and adapter plate.



10,000 - 24,000 Lumens
Up to 137 LPW
Up to 55°C (131°F)
CRI > 80 / 5000K
Reflectors with Parabolic Shape
Patented ParaBar™ Light Bar System

Input Power: 74 - 176W
120-277V / 347-480V
0-10V Dimmable
Extruded Aluminum Heatsinks
14 Year Warranty on Light Bars
5 Year Warranty on LED Driver



linmoreled.com/HBR

HIGH PERFORMANCE LOW BAY (HPL)



Applications: Industrial, Manufacturing, Warehouses, Retail, Most Food Processing.



10,000 - 23,000 Lumens
Up to 138 LPW
Up to 55°C (131°F)
CRI > 80
3500K, 4100K, 5000K
Frosted Lenses, 240° Beam Angle
Patented URS™ Light Bars

Input Power: 71 - 171W
120-277V
0-10V Dimmable
Extruded Aluminum Heatsinks
Dust-Resistant LED Modules
14 Year Warranty on Light Bars
10 Year Warranty on LED Driver



linmoreled.com/HPL

VAPOR TIGHTS



HOSEDOWN 2.0 (HD2)



Applications: Washdown, Wet Locations, Food Processing, Hazardous Locations, Industrial.



6,000 - 30,000 Lumens

Up to 168 LPW

Up to 40°C (104°F)

CRI > 80

3500K, 4000K, 5000K

Clear, Frosted, and Ribbed Lenses

UV Stabilized Acrylic (std.), PC optional

Input Power: 42 - 189W

120-277V / 347-480V

0-10V Dimmable

UL 94 5VA Fiberglass Housing

2' and 4' Options Available

HazLoc Class I, Division 2 Available

5 Year Warranty (L70 included)

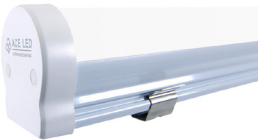


linmoreled.com/HD2

ACE LED WET-RATED STRIP (WS1)



Applications: Washdown, Wet Locations, Food Processing, Industrial, Commercial.



3,500 / 5,700 Lumens

Up to 160 LPW

Up to 40°C (104°F)

CRI > 80

3500K, 4100K, 5000K

Frosted Lens, 180° Beam Angle

Input Power: 22 / 36W

120-277V

Extruded Plastic Housing

Stainless Steel Brackets

Aluminum Core PCB

5 Year Warranty



linmoreled.com/WS1

WET-RATED TUBULAR FIXTURE (TBW)



Applications: Washdown, Wet Locations, Food Processing, Industrial, Commercial.



5,000 Lumens

Up to 140 LPW

Up to 50°C (122°F)

CRI > 70

3500K, 4100K, 5000K

Frosted Lens, 120° Beam Angle

Impact Resistant PMMA Lens

Input Power: 36W

120-277V

0-10V Dimmable

Stainless Steel Hardware

Pressure Relief Valve

No-cavity Design Repels Dirt & Debris

5 Year Warranty



linmoreled.com/TBW

TROFFERS





NEW ACE LED TROFFER (AT1)

Applications: Offices, Education, Retail, Hospitality, Car Dealerships.



3,750 - 6,250 Lumens

Up to 125 LPW

Up to 35°C (95°F)

CRI > 80

Selectable CCT (3500K, 4000K, 5000K)

Frosted Lens, 120° Beam Angle

Sold in Contractor / Bulk Pack

Selectable Input Power: 30W to 50W

120-277V

0-10V Dimmable

Bluetooth® Mesh Ready

2x2 and 2x4 Sizes Available

Recessed Mount within T-Bar Grid

5 Year Warranty



linmoreled.com/AT1



NEW ACE LED PANEL (AP1)

Applications: Offices, Education, Retail, Hospitality, Car Dealerships.



3,750 - 6,250 Lumens

Up to 125 LPW

Up to 35°C (95°F)

CRI > 80

Selectable CCT (3500K, 4000K, 5000K)

Frosted Lens, 120° Beam Angle

Sold in Contractor / Bulk Pack

Selectable Input Power: 30W to 50W

120-277V

0-10V Dimmable

Bluetooth® Mesh Ready

1x4, 2x2 and 2x4 Sizes Available

Recessed Mount within T-Bar Grid

5 Year Warranty



linmoreled.com/AP1



HIGH OUTPUT TROFFER (HT1)

Applications: High Ceiling Indoor Facilities, Car Dealerships, Retail, Hospitality, Education.



12,000 - 24,000 Lumens

Up to 151 LPW

Up to 45°C (113°F)

CRI > 80, (>90 optional)

3500K, 4000K, 5000K

Frosted Lens, 180° Beam Angle

Surge Protection up to 10kV

Input Power: 92 - 187W

120-277V / 347-480V

0-10V Dimmable

Occupancy Sensor (Optional)

2x2, and 2x4 Sizes Available

Recessed Mount within T-Bar Grid

10 Year Warranty (L70 included)



linmoreled.com/HT1

TROFFER KITS



NEW ACE LED DOOR KIT (AD1)

LED Retrofit Kit for Existing Recessed Troffers. Applications: Offices, Education, Retail, Hospitality.



3,750 - 6,250 Lumens

Up to 125 LPW

Up to 35°C (95°F)

CRI > 80

Selectable CCT (3500K, 4000K, 5000K)

Frosted Lens, 120° Beam Angle

Sold in Contractor / Bulk Pack

Selectable Input Power: 30W to 50W

120-277V

0-10V Dimmable

Bluetooth® Mesh Ready

2x2 and 2x4 Sizes Available

Recessed Mount within T-Bar Grid

5 Year Warranty



linmoreled.com/AD1

CENTER BASKET RETROFIT KIT (ARK)

Upgrades Lithonia Avante® Troffers in 5 minutes. Applications: Offices, Education, Retail, Medical Facilities.



2,400 - 5,300 Lumens

Up to 141 LPW

Up to 50°C (122°F)

CRI > 80

3500K, 4100K, 5000K

Frosted Lens, 180° Beam Angle

Patented URS™ Light Bar

Input Power: 18 - 43W

120-277V

0-10V Dimmable

2x2 and 2x4 Sizes Available

Fits Most Center Basket Troffers

20 Year Warranty Light Bars

10 Year Warranty LED Driver



linmoreled.com/ARK

STRIPS



STRIP CONVERSION KIT (SCK)



Applications: Offices, Education, Retail, Hospitality, Commercial, Industrial.



2,600 - 6,100 Lumens

Up to 173 LPW

Up to 50°C (122°F)

CRI > 80

3500K, 4100K, 5000K

Frosted Lenses, 180° Beam Angle

Input Power: 15 - 36W

100-277V

0-10V Dimmable

Extruded Aluminum PCBs

4' Fixture. 8' Option by Linking Two

5 Year Warranty



linmoreled.com/SCK

STRIP FIXTURE (ST1)



Applications: Offices, Education, Retail, Hospitality, Commercial, Industrial.



3,100 - 5,000 Lumens

Up to 140 LPW

Up to 50°C (122°F)

CRI > 80

3500K, 4000K, 5000K

Frosted Lenses, 180° Beam Angle

Easy Fixture Access with Latches

Input Power: 22 - 36W

120-277V

0-10V Dimmable

4' Fixture

Linkable up to Four Fixtures

5 Year Warranty



linmoreled.com/ST1

NEW LINEAR 3.0 (LR3)



Applications: Offices, Education, Retail, Hospitality, Commercial, Industrial.



3,300 - 14,200 Lumens

Up to 177 LPW

Up to 45°C (113°F)

CRI > 80

3500K, 4000K, 5000K

Frosted Acrylic Lens

Full Fixture and Retrofit Kit Options

Input Power: 21 - 81W

120-277V

0-10V Dimmable

Steel Housing

4', 8' and 12' Sections

Link Sections for Continuous Row

5 Year Warranty (L70 included)



linmoreled.com/LR3

LIGHT BARS



UNIVERSAL RETROFIT SYSTEM ECO (URS-ECO)



Applications: Offices, Education, Retail, Hospitality, Commercial, Industrial, Most Food Processing.



1,350 - 18,500 Lumens

Up to 164 LPW

Up to 55°C (131°F)

CRI > 80

3500K, 4100K, 5000K

Volumetric Diffuser, 240° Beam Angle

U.S. Patent No. 10,054,296

Input Power: 9 - 132W

120-277V

0-10V Dimmable

Extruded Aluminum Heatsink

2' and 4' Options

10 Year Warranty Light Bars

10 Year Warranty LED Driver



linmoreled.com/URS-ECO

RAPIDLINK BAR SYSTEM (RLB) - Gen 3



Applications: Offices, Education, Retail, Hospitality, Commercial, Industrial, Most Food Processing.



1,600 - 3,200 Lumens

Up to 161 LPW

Up to 50°C (122°F)

CRI > 80

3500K, 4100K, 5000K

Frosted PC Lens, 180° Beam Angle

Input Power: 11 - 22W

100-277V

Extruded Aluminum Housing

Link up to 40 Bars with 1 Connection

2' and 4' Lengths (1' to 8' as Custom)

7 Year Warranty



linmoreled.com/RLB

LIGHT BARS



ACE BAR KIT (ABK) DIMMABLE



Applications: Offices, Education, Retail, Hospitality.



1,200 - 6,000 Lumens
Up to 154 LPW
Up to 45°C (113°F)
CRI > 80
3500K, 4100K, 5000K
Frosted Lens, 180° Beam Angle

Input Power: 9 - 40W
120-277V
0-10V Dimmable
1, 2, 3 or 4 Bar Kits Available
2' and 4' Options
7 Year Warranty



linmoreled.com/ABK

ACE BAR KIT (ABK) NON-DIMMABLE



Applications: Offices, Education, Retail, Hospitality.

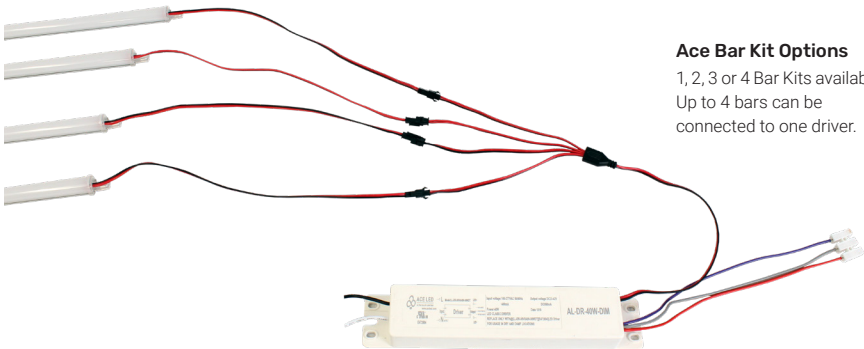


1,200 - 6,000 Lumens
Up to 154 LPW
Up to 45°C (113°F)
CRI > 80
3500K, 4100K, 5000K
Frosted Lens, 180° Beam Angle

Input Power: 9 - 40W
120-277V
Fixed Driver (Non-Dimmable)
1, 2, 3 or 4 Bar Kits Available
2' and 4' Options
7 Year Warranty



linmoreled.com/ABK



Ace Bar Kit Options

1, 2, 3 or 4 Bar Kits available.
Up to 4 bars can be
connected to one driver.

WRAPS & TUBES



WRAP 1 FIXTURE (WR1)



Applications: Offices, Education, Retail, Hospitality, Commercial, Industrial.



2,500 - 5,400 Lumens

Up to 153 LPW

Up to 50°C (122°F)

CRI > 80

3500K, 4100K, 5000K

Volumetric Diffuser, 180° Beam Angle

Patented AirFlow Cavity

Input Power: 15 - 44W

120-277V

0-10V Dimmable

Extruded Aluminum Heatsink

4' Fixture

Surface or Suspended Mounting

10 Year Warranty, 5 Year for Driver



linmoreled.com/WR1

360 ULTRA PERFORMANCE LED TUBE (360)



Applications: Offices, Education, Retail, Hospitality, Commercial, Industrial, Most Food Processing.



3,600 - 6,000 Lumens

Up to 139 LPW

Replaces T8 - T12 Tubes

CRI > 80

3000K, 3500K, 4100K, 5000K

High-Impact PC Lens (Clear or Frosted)

360° Beam Angle

Input Power: 26 - 44W

100-277V

0-10V Dimmable

Extruded Aluminum Heatsink

4' and 8' Tubes

Requires External Driver

10 Year Warranty



linmoreled.com/360

ULTRA PERFORMANCE LED TUBE (UPT)



Applications: Offices, Education, Retail, Hospitality, Commercial, Industrial, Most Food Processing.



1,300 - 3,200 Lumens

Up to 148 LPW

Replaces T8 - T12 Tubes

CRI > 80

3000K, 3500K, 4100K, 5000K

High-Impact PC Lens (Clear or Frosted)

180° Beam Angle

Input Power: 9 - 22W

100-277V

0-10V Dimmable

Extruded Aluminum Heatsink

2' and 4' Tubes

Requires External Driver

10 Year Warranty



linmoreled.com/UPT

ULTRALINK

90% ENERGY SAVINGS AND INCREASED SAFETY AT NORTH BAKERSFIELD TOYOTA

At sunset, lighting turns on at 100% automatically. 30 minutes after business hours, lights dim to 15%, providing sufficient light when there's no activity. When a person enters the lot, lights in that area go up to 100%, improving visibility and deterring unwanted visitors after hours.



Linmore LED
ULTRALINK
Controls ReIMAGINED



WIRELESS BLUETOOTH® CONTROLS

A Strong and Secure Technological Foundation

UltraLink delivers wire-like performance and global interoperability to unleash the full potential of smart lighting networks. It is qualified by the Bluetooth SIG, which means your components will work with qualified Bluetooth mesh devices from other vendors.



SWITCHES

Wired and wireless switches offer manual control for custom zones.



SENSORS

Occupancy / motion and daylight sensors to optimize lighting behavior for maximum performance, energy savings, and safety.

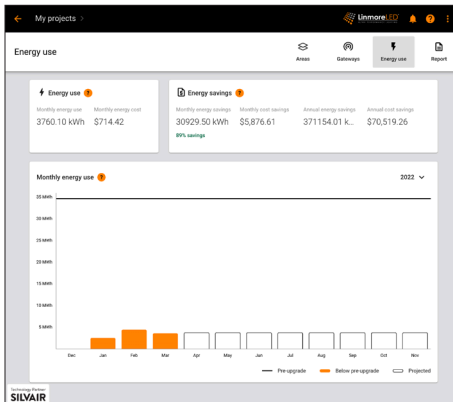


ULTRALINK iOS APP

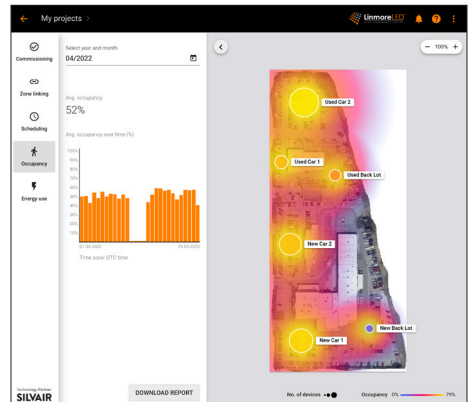
The app is the tool to operate, control, set up, and make changes to how the system functions. Adjustments are easy and can be made from the app as a facility's needs change over time. Always adaptable.

Technology Partner
SILVAIR

ENERGY DASHBOARD



HEAT MAPPING



LUMENS AS A SUBSCRIPTION®



GENERATE POSITIVE CASH FLOW WITH AN UPGRADE TO LED

LUMENS AS A SUBSCRIPTION® (LaaS), provided by Linmore Lighting Services, is a Subscription Agreement that includes a new lumen supply system, installation, and maintenance for 10 years.



No Upfront
Capital



Positive
Cash Flow



Covers All
Facilities

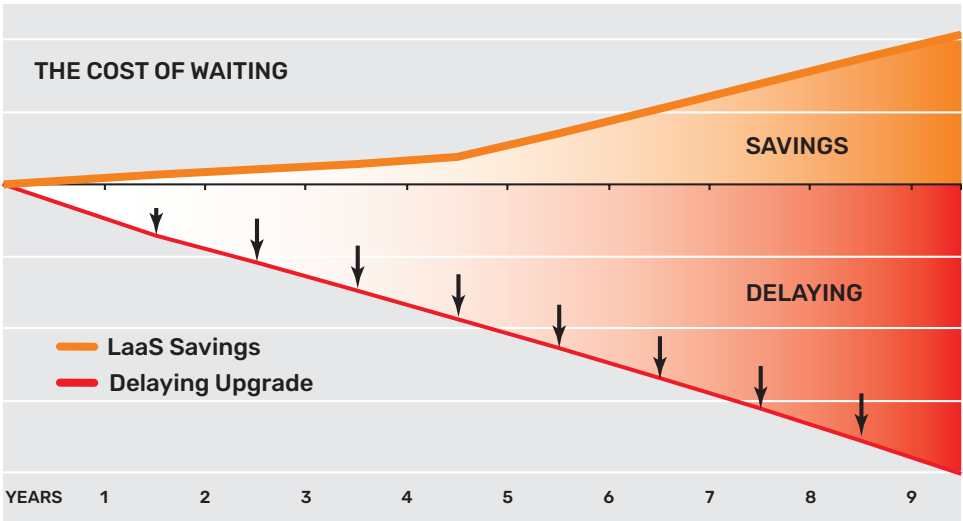


Off Balance
Sheet¹



Maintenance
Included

The monthly payment is funded by savings created by the LED lighting, **DELIVERING POSITIVE CASH FLOW** for most facilities.



¹ Consult your tax professional.

LIGHT'EM UP SALES CONTEST



EARN YOUR CHANCE TO WIN A BRAND NEW CORVETTE!

CONTEST PERIOD: January 1, 2022 - December 31, 2023

AWARD: New Chevrolet Corvette, Approximate Value \$65,000

HOW TO WIN?

- Buy \$500,000 of Linmore LED products and get your name on a ball.
- Each additional \$250,000 gets you an additional ball. Buy \$1 million = get 3 balls.
- Balls will be labeled by participant and placed in a lottery style tumbler.

See Terms & Conditions at: linmoreled.com/corvette



LinmoreLED[®]

ULTRA PERFORMANCE LIGHTING

Linmore LED Labs, Inc.

linmoreled.com | 559 485 6010 | info@linmoreled.com | 2360 S Orange Ave, Fresno, CA 93725

All specifications are subject to change without notice. Please visit linmoreled.com for latest information. All values are typical or design values and series averages. Actual performance may differ as a result of end-user environments and applications. Consult Linmore LED with specific inquiries. Copyright © 2023, Linmore LED Labs, Inc. All rights reserved. No part of this document may be reproduced in any form without the prior written permission of Linmore LED.

Updated: 2023.06.19